

Pinnacle TREX

Pinnacle

TRex

GB March 2003

© Pinnacle Systems GmbH 2003

All rights reserved.

No part of this manual may be reproduced or transferred to other media without explicit written permission from Pinnacle Systems GmbH, Braunschweig, Germany.

All brand or product names are trademarks or registered trademarks of their respective holders.

This manual is printed on chlorine-free, bleached paper using solvent-free ink.

Pinnacle Systems GmbH has written this manual to the best of its knowledge, but does not guarantee that the programs/systems will fulfill the users' intended applications.

No warranty is made as to the specifications of features.


Pinnacle Systems GmbH retains the right to make alterations to the content of the manual without obligation to inform third parties.

All quotes, sales, supply and manufacturing contracts from Pinnacle Systems GmbH, including consulting, installation and other contractual services are subject exclusively to the General Sales and Delivery Terms of Pinnacle Systems GmbH.



Pinnacle TRex



This software can be used for free in a testing period of 60 days. Please register TRex when the trial version has expired. For this purpose, please click on the button  in the upper bar of the TRex window and follow the instructions.

Should you receive TRex together with another Pinnacle Product (e.g. Pinnacle Bungee, PCTV Sat) you will then be the owner of the full version. Registered users obtain the right to use the software on one PC without limitations.

WHAT IS TREx?

TRex is a conversion program. It enables you to convert multimedia files from one format to another, e.g. from DV AVI to MPEG-1 (VideoCD format).

Set-up and configuration dialogues have been dispensed within a deliberate attempt to keep the user interface simple.

SYSTEM REQUIREMENTS

- MS DirectX 8.1 or higher
- DVD Decoder

SUPPORTED OPERATING SYSTEMS

- MS Windows 98 FE
- MS Windows 98 SE
- MS Windows ME
- MS Windows 2000
- MS Windows XP

SUPPORTED FORMATS

Input

It should be possible to convert any audio or video file that can be played using Mediaplayer or GraphEdit.

- | | | |
|--------------|-------|--------------------------------------|
| Audio | ▪ ASF | MS Advanced Streaming Format |
| | ▪ M1A | MPEG Audio |
| | ▪ M2A | MPEG Audio |
| | ▪ MP3 | MPEG Audio; MPEG-1 Layer3 |
| | ▪ MPA | MPEG Audio |
| | ▪ Wav | PCM, μ Law |
| | ▪ WMA | Microsoft Media Audio Format |
| Video | ▪ ASF | MS Advanced Streaming Format |
| | ▪ AVI | Audio Video Interleaved |
| | ▪ DAT | MPEG-1; VideoCD files |
| | ▪ MPG | MPEG; MPEG-1, MPEG-2 or MPEG-4 files |
| | ▪ M1V | MPEG-1; Video elementary stream |
| | ▪ M2V | MPEG-2; Video elementary stream |
| | ▪ TRP | MPEG-2; Transport Stream |

Output

It is only possible to convert to a particular target format if the necessary CoDec has been installed on the system.

- Audio**
- Wav 44.1 kHz; 16 Bit; Stereo
 - MP3 44.1 kHz, 128 kBit, Stereo; MPEG-1 Layer III (An encoder (e.g. Lame Encoder) has to be already installed on the system)

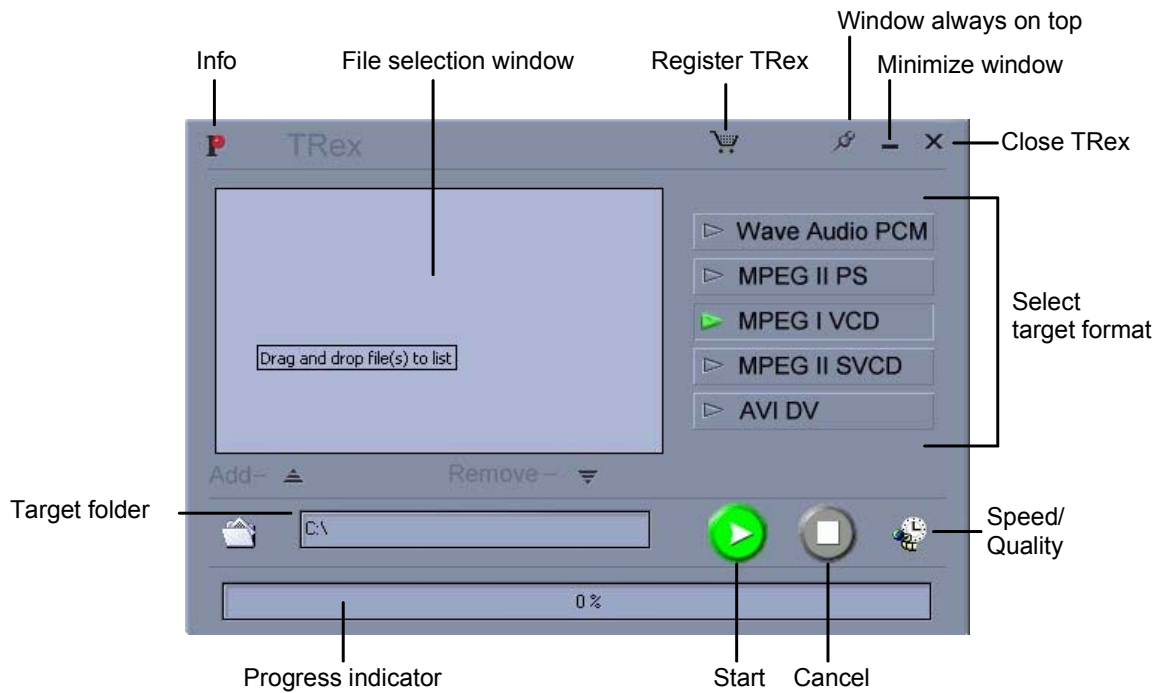


- Video**
- MPEG-2 PS 6 Mbit MPEG-2 Video; 44.1 kHz; 192 kBit MPEG-1 Layer II Audio
 - MPEG-1 VCD 1.15 Mbit MPEG-1 Video; 44.1 kHz; 192 kBit MPEG-1 Layer II Audio
 - MPEG-2 SVCD 2.5 Mbit MPEG-2 Video; 4.1 kHz; 192 kBit MPEG-1 Layer II Audio
 - AVI DV DV Video; 48.0 kHz; Stereo Audio



- AVI MPEG-4 MS MPEG-4 Video; 44.1 kHz; 128 kBit MPEG-1 Layer III Audio (The encoder has to be already present on the system)

USING THE PROGRAM



Selecting files

The selected files/the files to be converted are shown in the file selection window. There are several ways of adding files to the list:

- "Add" button (in the application)
- "Ins" (on the keyboard)
- "Drag & Drop" into the file selection window
- "Drag & Drop" onto the link to the application

As many files as required can be imported into the file selection window. Once started, TRex converts all existing files into the chosen target format. Files are processed in sequence "from top to bottom". The order of the files to be processed can be changed using "Drag & Drop".

Deselecting file(s)

To remove files from the conversion list, the appropriate file has to be highlighted and either the "Remove" button in the application or the "Del" key on the keyboard has to be pressed.

Target folder

Here, you can define the target folder. If no target folder is defined, the folder in which the source file is to be found will be used. It is not necessary to define a target file name. The name of the source file plus the new file extension will be used. If the file name should already exist, a number will be appended to the file name and will be increased as necessary. TRex remembers the target folder so that this folder will be pre-selected even when the program is re-started later.

Selecting the target format

These buttons are used to determine the target format. The button for a particular target format is only available if the necessary CoDec has been installed on the system! Only one target format can be selected at the same time. This will be used for all files in the file list.

Progress indicator

Here, the progress of the currently active conversion process is shown.

Start

The conversion process is initiated using this button. The button is "greyed out" during the conversion phase. Only the "Cancel" button (now red) can be used. If the conversion process is not manually interrupted, the target file will be fully converted. Following this, the "Start" button will become ready again (green).



The original file will be kept still intact.

Cancel

The conversion process can be interrupted by means of this button. The application is not terminated however. The target file created up to that point is closed in an orderly manner and is fully usable. As the process was not properly completed, the source file will still appear in the file selection window.

Speed/Quality

Depending on the video input material it is possible to switch between "Speed" and "Quality".

This way, you can give priority to either the speed of the conversion process or to the quality (process will take longer) of the target file.

Info

By clicking on this button, general information concerning TRex will be shown in the file selection window.

Window always on top

If you click on this button the application will be "always on top" of your Desktop.

Minimize window

The application will be minimized. It will appear on the task bar and will continue to be active.

Close TRex

The application will be closed.

Register TRex

If you have Internet access, by clicking this button you can connect directly to the corresponding Pinnacle Internet page for registering your TRex software.